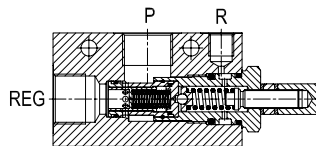
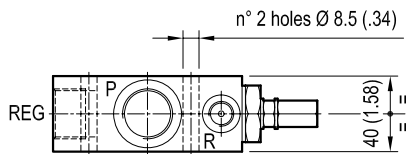
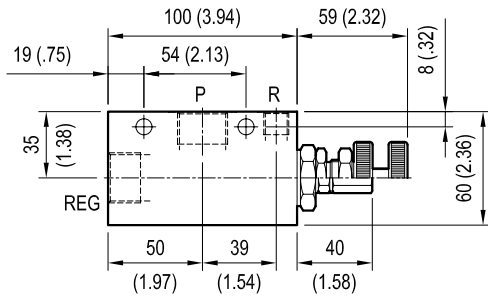


PRESSURE REDUCING PILOT OPERATED SPOOL TYPE

VRPC-150

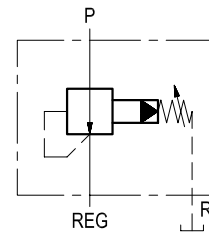
05.90.33 - X - Y - Z



[mm (inches)]

P = Inlet
REG = A (Reduced pressure)
R = T (Tank)

Initially, flow passes freely from P to REG. When the pressure at REG exceeds the pressure setting, the valve acts to restrict input flow at P. This increases the pressure drop through the valve and maintains consistent pressure at REG. The spring chamber is drained to prevent a build-up of back-pressure against the spool.



P = Inlet
REG = A (Reduced pressure)
R = T (Tank)

TECHNICAL DATA

Max. operating pressure: 210 bar (3000 psi)

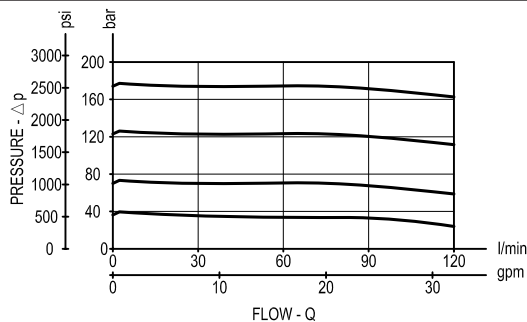
Max flow: 120 l/min (32 gpm)

Aluminium body

NOTE: aluminium bodies are often strong enough for operating pressures exceeding 210 bar (3000 psi), depending from the fatigue life expected in the specific application. If in doubt, consult our Service Network.

Weight: 1 kg (2.2 lbs)

Standard internal orifice: 0.6 mm



X

ADJUSTMENTS

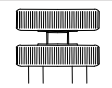
03

Leakproof inner hex. socket screw



04

Handknob and locknut



Z

SPRINGS

Z	Adj. press. range bar (psi)	Pres. increase bar/turn (psi/turn)	Std. setting bar (psi) Q=5 l/min		
20	20-210 (290-3000)	32 (464)	100 (1450)		

Y

PORT SIZE

Y	P - REG	R
03	G 1/2	G 1/4
04	G 3/4	G 1/4