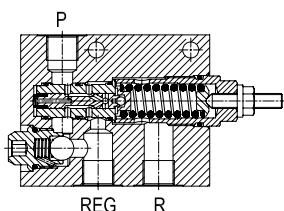
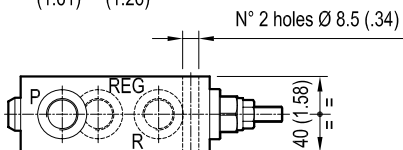
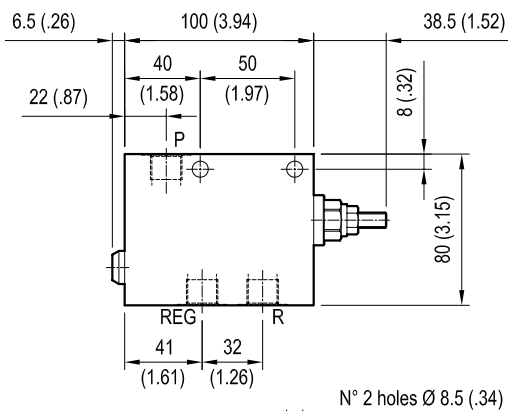


**PRESSURE REDUCING AND RELIEVING,
DIRECT ACTING SPOOL TYPE,
FREE FLOW CHECK VALVE**

VRP-R-VU

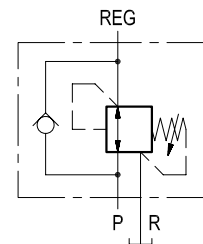
05.90.19 - X - Y - Z



P = Inlet
REG = A (Reduced pressure)
R = T (Tank)

[mm (inches)]

Initially, flow passes freely from P to REG. When the pressure at REG exceeds the pressure setting, the valve acts to restrict input flow at P. This increases the pressure drop through the valve and maintains consistent pressure at REG. The spring chamber is drained to prevent a build-up of back-pressure against the spool. Additionally, if pressure at REG rises above the pressure setting, flow is relieved to R (Tank) until the setting is re-attained. A check valve allows quick emptying of REGULATED circuit when inlet pressure drops low.



P = Inlet
REG = A (Reduced pressure)
R = T (Tank)

TECHNICAL DATA

Max. operating pressure: 210 bar (3000 psi)

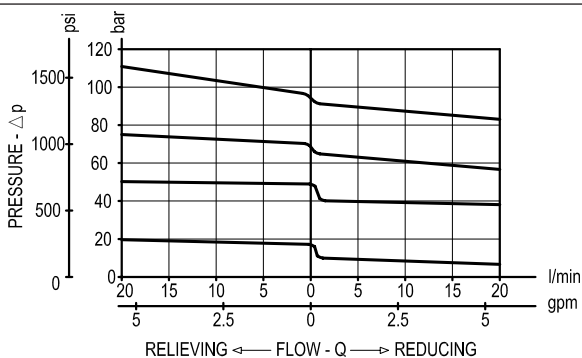
Max flow: 20 l/min (5 gpm)

Aluminium body

NOTE: aluminium bodies are often strong enough for operating pressures exceeding 210 bar (3000 psi), depending from the fatigue life expected in the specific application. If in doubt, consult our Service Network.

Weight: 1 kg (2.2 lbs)

Max leakage: 10 cc/min (0.6 in³/min) at 90% of pressure setting.



X ADJUSTMENTS

03 Leakproof hex. socket screw



SPRINGS

Z	SPRINGS		
	Adj. press. range bar (psi)	Pres. increase bar/turn (psi/turn)	Std. setting bar (psi) Q=5 l/min
02	2-21 (30-305)	3 (44)	10 (145)
04	3-42 (44-610)	5 (73)	20 (290)
06	7-63 (102-914)	8 (116)	30 (435)
10	11-105 (160-1525)	13 (189)	50 (725)

PORT SIZE

Y
P - R - REG
02 G 3/8