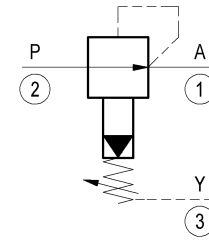
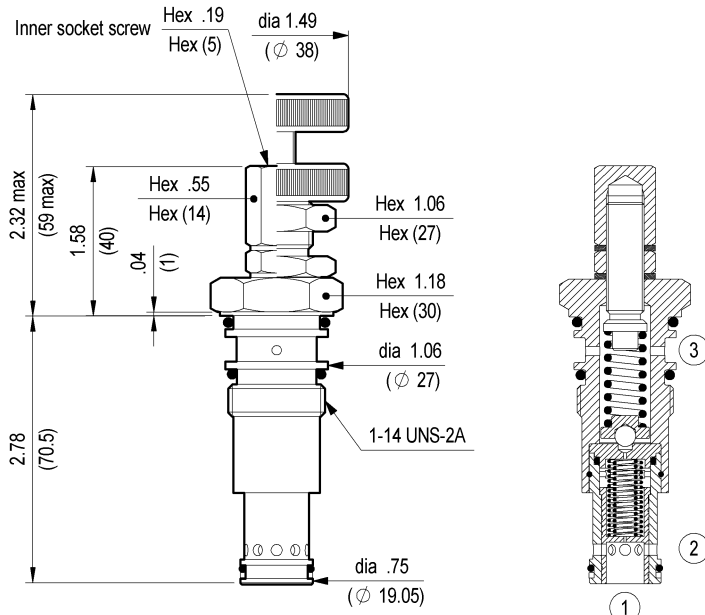




**PRESSURE REDUCING,
PILOT OPERATED SPOOL TYPE
SPECIAL CAVITY**

VRP-150

04.93.01 - X - 99 - Z

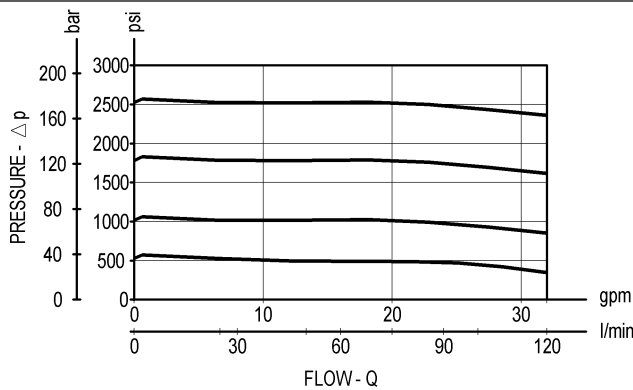


TECHNICAL DATA

| | | |
|--------------------------|---------------------------|--------------|
| Max. pressure: | 3600 psi | (250 bar) |
| Max. regulated pressure: | 3000 psi | (210 bar) |
| Max. flow: | 32 gpm | (120 l/min) |
| Special cavity : | 072 (see page CT.S.002.U) | |
| Installation torque : | 90-91 ft-lb | (121-123 Nm) |
| Weight: | 0.617 lbs | (0.280 Kg) |
| Std. internal orifice : | 0.6 mm | |

Initially, flow passes freely from 2 to 1. When the pressure at 1 exceeds the pressure setting, the valve acts to restrict input flow at 2. This increases the pressure drop through the valve and maintains consistent pressure at 1. The spring chamber is drained at 3 to prevent a build-up of back-pressure against the spool.

Inches
(mm)



X ADJUSTMENTS

| | | |
|-----------|-----------------------------|--|
| 03 | Leakproof hex. socket screw | |
| 04 | Handknob and locknut | |

SPRINGS

| Z | Adj. press. range psi (bar) | Press. increase psi / turn (bar/turn) | Standard setting psi (bar) | | |
|-----------|-----------------------------|---------------------------------------|----------------------------|--|--|
| 20 | 290-3000 (20-210) | 464 (32) | 1450 (100) | | |
| | | | | | |
| | | | | | |
| | | | | | |
| | | | | | |